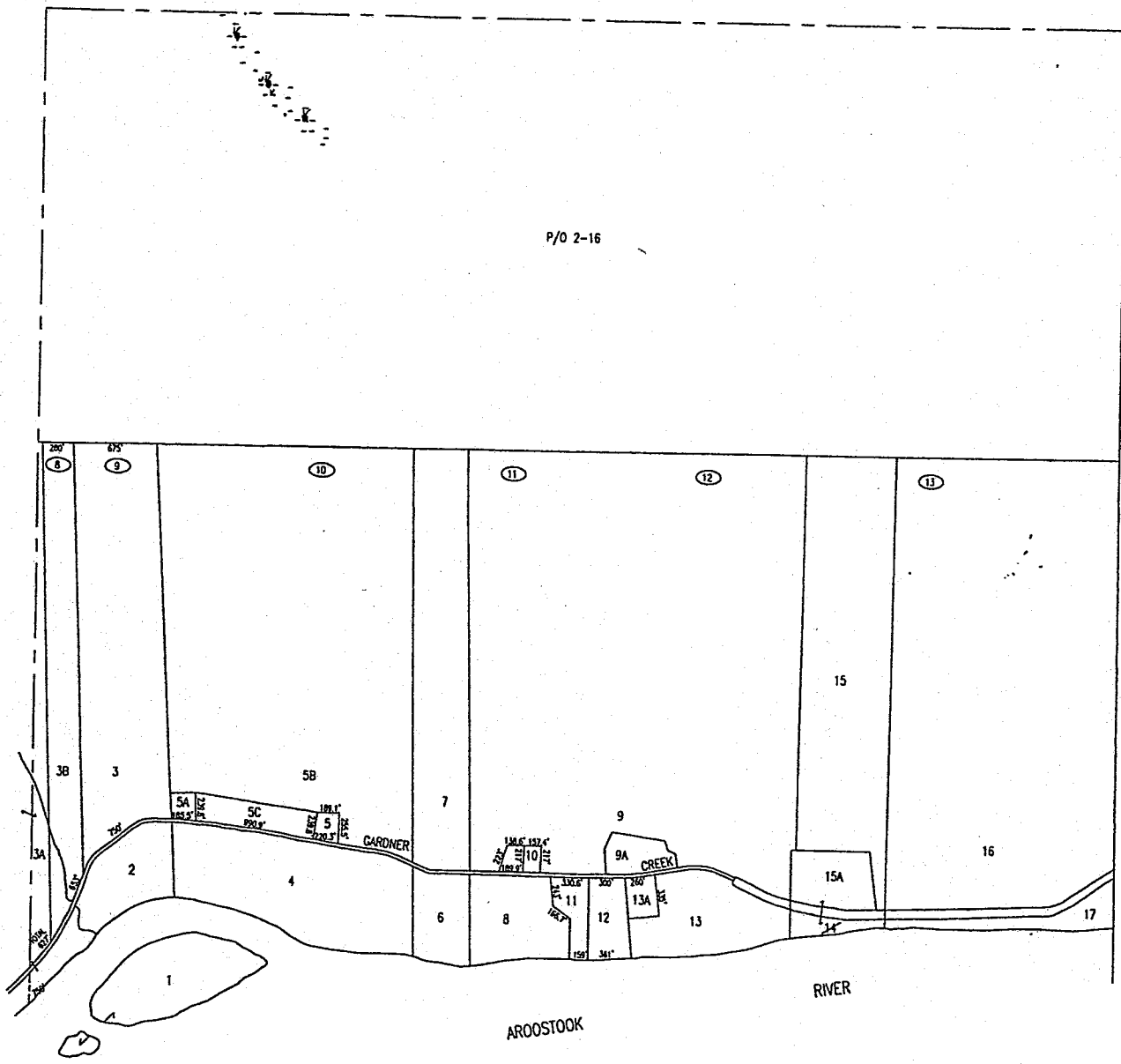


P/O 2-16

W
A
S
H
B
U
R
N



FOR ASSESSMENT PURPOSES
NOT TO BE USED FOR CONVEYANCES

PROPERTY MAP
TOWN OF WADE
AROOSTOOK COUNTY, MAINE
PREPARED BY:
JAMES W. SEWALL COMPANY, OLD TOWN, MAINE
SCALE: 1"=500' +/-
UPDATED BY JUST VALUE ASSOCIATES, PLLC.
FEBRUARY 2015